



This Service Information bulletin supersedes SI B00 04 08 dated June 2009.

MODEL

2009 128i, 128i SULEV/PZEV, 135i Coupe (E82)	2009 128i, 128i SULEV/PZEV, 135i Convertible (E88)	2009 328i Sedan, 328i SULEV/PZEV, 328i xDrive, 328i xDrive SULEV/PZEV, 335i, 335i xDrive (E90)	2009 335d (E90)
2009 328i Coupe, 328i SULEV/PZEV, 328i xDrive, 328i xDrive SULEV/PZEV, 335i, 335i xDrive (E92)	2009 328i, 328i xDrive Sports Wagon (E91)	2009 328i, 328i SULEV/PZEV, 335i Convertible (E93)	2009 M3 Coupe (E92)
2009 M3 Sedan (E90)	2009 M3 Convertible (E93)	2009 528i, 528i xDrive, 535i, 535i xDrive, 550i, M5 Sedan (E60)	2009 535iT xDrive Sports Wagon (E61)
2009 650i, M6 Coupe (E63)	2009 650i, M6 Convertible (E64)	2009 750i (F01)**, 750Li (F02)	2009 Z4 sDrive30i, sDrive35i Roadster (E89)

SITUATION

Model	Production Start*	Comments
128i, 135i Coupe	9/08	Optional navigation has new Car Information Computer (CIC) and iDrive
128i, 135i Convertible	9/08	"
128i Coupe, Convertible SULEV/PZEV	9/08	"
328i, 335i Coupe	9/08	"
328i xDrive, 335i xDrive Coupe	9/08	Optional navigation has new Car Information Computer (CIC) and iDrive. AWD models receive new naming.
328i, 335i Sedan	9/08	LCI changes.
328i xDrive, 335i xDrive Sedan	9/08	LCI changes. AWD models receive new naming.
335d	11/08*	New model, with 3-liter twin-turbo direct injection high performance diesel engine (engineering designation M57)
328i, 328i xDrive Sedan; 328i, 328i xDrive Coupe SULEV/PZEV	9/08	Sedan: LCI changes. Coupe: No changes from 2008 AWD models receive new names
328i, 328i xDrive Sports Wagon	9/08	LCI changes
328i, 328i SULEV/PZEV, 335i Convertible	9/08	Optional navigation has new Car Information Computer (CIC) and iDrive
M3 Coupe	9/08	"
M3 Sedan	9/08	LCI changes
M3 Convertible	9/08	Optional navigation has new Car Information Computer

(CIC) and iDrive

528i, 528i xDrive, 535i, 535i xDrive, 535i xDrive Sports Wagon	9/08	New iDrive controller. AWD models receive new naming.
550i	9/08	New iDrive controller.
M5	9/08	New iDrive controller.
650i Coupe, Convertible	9/08	New iDrive controller.
M6 Coupe	9/08	New iDrive controller.
M6 Convertible	9/08	New iDrive controller.
750i, 750Li	1/09	Completely new model with N63 twin-turbocharged V8 engine; successor to the E65/E66
Z4 sDrive30i, sDrive35i Roadster	3/09	Completely new model with N52K or N54 6-cylinder engines; successor to E85 Z4 Roadster

*Availability approx. 1 month later

** The designation "F01" is utilized because all 2-digit numbers for the previous "E__" development codes have been used up (i.e. E93 is the current 3 Series convertible). The next consecutive letter is F, with the first number code (01) being assigned to the new 7 Series. Future new BMW models will have designations using the "F" and numbers greater than "02".

Brief summary of new features on the 2009 3 Series Sedan and Sports Wagon

The 2009 3 Series Sedan and Sports Wagon are receiving numerous equipment and design changes as part of the Life Cycle Impulse (LCI):

- Front bumper
- Headlamps
- Hood
- Kidney Grill
- Rocker panels
- Tail lamps
- Interior material and trim enhancements
- New optional Car Information Computer (CIC) and iDrive

335d

BMW is introducing a diesel engine to the USA for the first time in over 20 years with the Advanced Diesel with BluePerformance. The 335d (E90), with its high-performance diesel engine, is certified for all 50 states. The 3-liter inline 6-cylinder engine has advanced features such as:

- Sequential twin turbochargers with air-to-air intercooler
- Common-rail high pressure (max. 1800 bar/over 26,000 psi) fuel injection which sprays diesel fuel directly into the combustion chamber
- Piezo-electric diesel fuel injectors
- Exhaust particulates filter, with self-cleaning function
- Selective Catalytic Reduction exhaust treatment using Diesel Exhaust Fluid (DEF) to reduce nitric oxide (NOx)
- A reinforced aluminum crankcase

The two turbochargers are differently sized to best match the engine's varying operating speeds. The smaller turbo is activated at low engine speeds to minimize inertial lag for quick response. The second, larger turbo becomes active at higher RPMs. With a remarkable maximum 425 lb. ft of torque at relatively low engine RPMs, the engine provides effortless and immediate acceleration, together with high fuel economy. The 335d is only available with a 6-speed automatic transmission, designation 6HP26TU.

Some basic specifications of the 335d's engine:

Model	2009 335d
Full designation	M57D30T2
Displacement (cc)	2993
Bore, stroke (mm)	84.0 x 90.0
Maximum output, hp	265 @ 4200 rpm
Maximum torque, lb.ft	425 @1750-2250 rpm
Maximum engine speed, peak/continuous	5250/4400 rpm
Compression ratio :1	16.5
Injection	Common rail, max. pressure approx. 26,000 psi, piezo-electric injectors with multiple injection phases
Intake	Air-to-air intake charge cooling. Small and large turbochargers working sequentially integrated into both exhaust manifolds.
Valvetrain	Dual-overhead cams, made of hollow steel tube in composite design. VANOS or Valvetronic not utilized due to sufficient low-end torque characteristics
Engine block	Aluminum, with reinforcing ribs
DME engine management	DDE7.3
Fuel requirement	Ultra-Low Sulfur Diesel (ULSD, max. 15 parts per million of sulfur), min. 51 Cetane. Use of B10 or higher biodiesel, kerosene, or mixing with small amounts of gasoline is not permitted!
Post-combustion emissions reduction systems	Diesel Particulate Filter (DPF), Diesel Oxidation Catalyst (DOC), Selective Catalyst Reduction (SCR)

Selected performance specifications for the 335d, compared to the 328i and 335i:

	328i (automatic)	335i (automatic)	335d (automatic only)
Unladen weight, lb.	3406	3605	3825
Rear axle differential final drive ratio, :1	3.73	3.46	2.81
0-60 mph acceleration, sec.	6.9	5.6	6.0
0- 1/4 mile acceleration, elapsed time (sec)	15.1	13.9	14.1
EPA ratings, city/hwy	19/28	17/26	23/36

New 7 Series

BMW introduces the 5th all-new generation of its flagship sedan. It incorporates a full redesign in styling, engineering and equipment compared to its E65 predecessor. Just like all previous 7 Series, the F01 and F02 are built in the town of Dingolfing, in Germany's state of Bavaria. Some key features:

- Aluminum doors, front fenders, hood, and roof panel
- Multi-link double-wishbone front suspension design instead of MacPherson struts
- All-aluminum twin-turbo 4.4 liter direct-injection V8 gasoline engine (N63)
- Central console electronic shifter ("E-Shift") instead of steering column stalk shifter
- 2nd generation iDrive control as standard equipment with 10.2" Central Information Display (CID)

- Damping Dynamics Control as standard equipment
- 4-zone climate control system
- "Black Panel" display instrument cluster
- 6-speed automatic transmission
- Optional Lane Departure Warning, Active Blind Spot Detection, High Beam Assistant, Side view cameras
- Optional Integral Active Steering (IAS) with speed-sensitive rear wheel steering

Selected dimensions compared to the previous generation 7 Series:

		2009 750i F01	2008 750i E65
Vehicle length	inch	199,8	198.4
Vehicle width	inch	74,9	74.9
Vehicle height, unloaded	inch	58,3	58.7
Wheelbase	inch	120,9	117.7
Turning circle, standard steering	ft	40,0	39.7
Turning circle, optional IAS	ft	37.3 (slow vehicle speed)	not available
Track, front	inch	63,4	62.8
Track, rear	inch	65,0	62.8
Width at shoulder height, front	inch	59,2	59.3
Width at shoulder height, rear	inch	57,4	58.7
Effective leg room, front	inch	41,2	41.3
Effective leg room, rear	inch	38,4	37.2
Max. head room, front	inch	40,6	39.2
Eff head room, rear	inch	38,5	38.5
Trunk volume per SAE J1100	ft ³	14	17.7
Approx fuel tank capacity	gal	21,7	23.3
Unladen weight	lbs	4564	4486
Weight distribution, front/rear		51.4/48.6	49.9/50.1
Front brake disc, diameter	in.	14.7, ventilated	13.7, ventilated
Rear brake disc, diameter	in.	14.5	13.6
Transmission		ZF 6HP26 TU	ZF 6HP26
Rear axle ratio	:1	3.46	3.38
Acceleration 0-60mph	sec.	5.1	5.8
Drag coefficient	Cd	0.31	0.29
Total aerodynamic drag (Cd x frontal area)	ft ²	8.04	7.43

The 7 Series' N63 V8 engine features an unusual layout for the intake and exhaust, being reversed from most other conventional V8 designs. The intake valves are situated along the bottom, outer row within the cylinder head, fed by the intake manifold which splits the intake charge equally along both outer sides of the engine. Exhaust valves are situated along the upper row within the head (closer to the centerline of the engine). Exhaust gases leave the head into the "valley" on top of the engine, then have only a very short distance to travel before entering the twin turbochargers that are also located on top of the engine. Each cylinder head pressurizes one turbocharger. Exhaust gases are directed from above the central part of the engine, into two catalytic converters, down along each side and through the transmission tunnel. The benefit

of this design is minimal turbo lag for smooth, constant acceleration and driveability, and a compact overall powertrain. The same engine is installed in the BMW X6 xDrive50i.

Engine full designation	N63B44 O0
Configuration	90 degree V8, dual overhead cams, 4 valves/cylinder
Displacement (cc; cu. in.)	4395; 268
Bore, stroke (mm; in.)	89x88.3; 3.50x3.48
Maximum output, hp	400 @ 5500-6400 rpm
Maximum torque, lb. ft	450 @ 1800 4500 rpm
Compression ratio :1	10.0
Injection	high-precision direct injection (HPI) with piezo injectors
Intake	Air-to-liquid intake charge cooling. Twin turbochargers connected to short exhaust manifolds and main catalysts.
Valvetrain	double VANOS
Engine block	aluminum alloy
DME engine management	MSD85
Emissions category	ULEV2
Fuel Requirement	Premium unleaded gasoline, min. 91 AKI

New Z4

The third generation of BMW roadsters is completely redesigned with fresh, yet classic styling. For the first time, all Z4s are equipped with a retractable hardtop (RHT) as standard equipment. The 2-piece aluminum RHT functions similarly to the 3 Series convertible's RHT, retracting fully into the trunk in approx. 20 seconds.

Compared to the previous generation Z4 Roadster (E85), the Z4 E89's hardtop benefits from a 52% larger heated glass rear window, 40% larger side windows; and increased headroom and elbow room. The higher roofline and larger door openings permit easier entry and egress. Performance is enhanced by the choice of two inline-6 engines shared with the 1 and 3 Series, each displacing 3.0 liters. Some key features:

- Driving Dynamics Control (standard equipment) - 3 drivetrain and suspension settings
- Sun-reflective technology as standard equipment on the leather seating surfaces
- Rear storage shelf behind seats
- Variable luggage area via a moveable partition
- Electrically assisted power steering
- Air conditioning is standard equipment; automatic climate control is optional
- Condition Based Service (CBS) for calculating maintenance requirements
- 6-speed manual transmission with short-throw shifter
- Optional 6-speed Steptronic sport automatic transmission with steering wheel gearshift paddles for the Z4 sDrive30i
- Optional 7-speed, newly developed double-clutch sport automatic transmission for the Z4 sDrive35i, which shifts gears without any interruption of power
- Optional navigation system includes the new generation iDrive controller, and a high-resolution 8.8" LCD fold-up CID. Map data is stored on the navigation system's 80Gb hard drive, therefore no longer requiring separate map DVDs.

Selected dimensions compared to the previous generation Z4 Roadster (E85):

	2009 Z4 sDrive30i	2009 Z4 sDrive35i	2008 Z4 3.0si
	Roadster (E89)	Roadster (E89)	Roadster (E85)
Engine designation	N52B30O1 (N52K)	N54B30O0	N52B30O1

			(N54)	(N52K)
Standard-equipment transmission		M6	M6	M6
No of doors/seats	-	2/2	2/2	2/2
Vehicle length	inch	166.9	166.9	161.1
Vehicle width	inch	70.5	70.5	70.1
Vehicle height, unloaded	inch	50.8	50.8	51.1
Wheelbase	inch	98.3	98.3	98.2
Turning circle	ft	35.1	35.1	32.2
Track, front	inch	59.5	59.5	58.0
Track, rear	inch	60.5	60.5	60.0
Width at shoulder height	inch	53.3	53.3	52.5
Effective leg room	inch	42.2	42.2	42.0
Effective head room	inch	39.1	39.1	37.3
Trunk volume per SAE J1100 (luggage partition down/up)	ft ³	6.4/10.9	6.4/10.9	8.5/9.2
Approx. fuel tank capacity	gal	15.5	15.5	14.5
Unladen weight	lbs	3241	3450	3086
Weight distribution, front/rear	%	48.0/52.0	49.2/50.8	49.9/50.1
Engine type/cylinder/valves per cylinder	-	In line/6/4	In line/6/4	In line/6/4
Fuel management	-	MSV80	MSD81	MSV70
Intake		naturally aspirated, 3-stage	twin turbo	naturally aspirated, 3-stage
Displacement	cc/ cu. in.	2996/182.8	2979/181.8	2996
Stroke	mm/inch	88/3.46	89.6/3.53	88/3.46
Bore	mm/inch	85/3.35	84/3.31	85/3.35
Maximum output/engine speed	SAE hp/rpms	255/6600	300/5800	255/6600
Maximum torque/engine speed	lb/ft, rpms	220/2600	300/1400 - 5000	220/2600
Compression ratio/Fuel type	-	10.7 premium unleaded 91 AKI	10.2 premium unleaded 91 AKI	10.7 premium unleaded 91 AKI
Final drive ratio	-	4.27	3.08	3.23
Steering type/ratio	-	Rack & pinion/14.4	Rack & pinion/14.4	Rack & pinion/14.2
Turns, lock-lock		2.75	2.75	3.0
Brake front type/diameter	mm/inch	Vented disc/300/11.8	Vented disc/348/13.7	Vented disc/325/12.8
Brake rear type/diameter	mm/inch	Vented disc/300/11.8	Vented disc/324/12.8	Vented disc/294/11.6

Drag coefficient (top closed)	Cd	0.34	0.35	0.36
Total aerodynamic drag (Cd x frontal area)	ft ²	7.21	7.38	7.38
Top speed	mph	130	130	130
Top speed - unlimited	mph	150	150	150
Acceleration 0-60 mph	sec.	5.6	5.1	5.6
Fuel consumption city	mpg	19	18	18
Fuel consumption highway	Mpg	28	25	26
Battery capacity/installed position	Ah/-	70/Luggage comp.	80/luggage comp.	55 luggage comp.
Alternator output rating	A/W	170/2380	170/2380	155/2170

New features for various models

A new generation of the BMW iDrive controller is available in:

- 1 and 3 Series, as well as the Z4 Roadster, when ordered with the optional navigation system
- 5 Series as standard equipment even if the optional navigation system is not ordered
- 6 Series as standard equipment
- 7 Series as standard equipment

The optimized iDrive controller has function selection and activation via turn, push and tilt motions on the knob, surrounded by new direct-selection buttons (including "back").

Car Information Computer (CIC)

2009 1 and 3 Series, as well as the Z4 Roadster, with optional navigation are receiving a new integrated CIC system, which replaces the Car Communications Computer (CCC). CIC is recognizable by a high-definition 8.8" LCD screen on the instrument panel. Navigation information is now stored in the CIC's hard drive, eliminating the previous separate DVD. For more information on the CIC, refer to the Technical Training Express section of the 8/08 Service Round Table at BMW Centernet's Group University, video course VO548.

The 2009 7 Series has CIC as standard equipment, with a 10.2" LCD CID.

Reminder: The engine hood insulation pad has been discontinued on all 2009 3 Series (incl. M versions) except the 335d. Refer to [SI B51 16 08](#) for more information.



BMW passenger cars delivered to BMW centers starting in late February will have a new label on

- The left rearmost fixed window (all except 1 and 3 Series convertibles)
- The rear window (1 and 3 Series convertibles)

The label promotes BMW's EfficientDynamics, which is the term applied to a wide range of technologies and innovations which reduce exhaust emissions while also increasing engine output and driving pleasure. Even though the label is "static cling" instead of a permanent adhesive, it must remain in place for the customer.

Quality Certification 1 (QC1)

New QC1 forms have been developed for the 2009 models covered in this bulletin: SD92-376. The QC1 form with print date 2/09 also contains the 7 Series and Z4 Roadster.

Battery main disconnect switch: Discontinued on all 1 Series and most 3 Series, due to a larger battery and other electrical system management modifications.

Reminder: The LED flashlight (stored in the glove box) has been discontinued on all models.

3 Series (E93) Retractable Hardtop (RHT) operation: On 2009 models, the switch functions have changed. Open the top by *pushing down* on the console switch. To raise the top, *pull up* on the switch. *In comparison, the Z4 Roadster's RHT utilizes two separate buttons for opening and raising.*

3 Series Coupe and Convertible: An information tag has been provided with the vehicle. For more information refer to [SI B00 06 08](#).

1, 3, 7 Series and Z4 Roadster with navigation (whether standard equipment or optional): It is no longer necessary for the salesperson to load the navigation map DVD into the vehicle. These 2009 models feature CIC which already has the map data factory-loaded onto the system's hard drive.

Several vehicle pre-wiring harnesses have been discontinued for BMW accessory installations:

I. Telephone preparation pre-wire option code 0640 from all BMWs as of 9/2008 production.

- If the customer desires Bluetooth (BT) functionality, it must be ordered from the factory when ordering the vehicle.
- If a customer wishes to retrofit a Telematics Control Unit (TCU) into the vehicle to have BT hands-free function, please sell the customer a Garmin/Nuvi combined NAV/BT unit. The NUVI system is compatible with most BT phones. See the <http://www8.garmin.com/bluetooth> page for a list of compatible BT phones.

II. CD changer (CDC) pre-wire option code 0694 from all BMWs as of 9/2008 production. CDC retrofit kits for vehicles without pre-wire are available for:

- a. E82/88 1 Series
- b. E90/91/92/93 3 Series
- c. E60/61/63/64 5, 6 Series
 - The 5 Series sedan does not list a CDC retrofit kit on Aftersales Assistance Portal (ASAP) or the Aftersales website. However, the kit for E63/64 can be used to retrofit CDC into an E60.

335d

The only fuel approved for the 335d is Ultra-Low Sulfur highway Diesel. ULSD contains a maximum of 15 parts per million (ppm) of sulfur. Low-sulfur diesel (LSD) should never be used, because it contains a much higher concentration of sulfur (up to 500 ppm), which can damage the diesel particulate filter (DPF) as well as increase exhaust emissions.

ULSD dispensing pumps are labeled accordingly:



"B5" Biodiesel that consists of a maximum of 5% is approved for use.

The fuel filler neck has been designed with a misfueling feature that only allows the larger diameter diesel fuel filler nozzle to be inserted. The smaller diameter nozzle found on unleaded gasoline pumps cannot be inserted. Nevertheless, *if any other fuel* (i.e., biodiesel rated at B10 or higher, gasoline, or kerosene) *has*

mistakenly been filled, do not start the engine, not even to move the car away from the fuel pump! Serious damage to the engine can result.

A diesel misfueling bypass adapter is included with every 335d wholesaled after 1-1-09, shrink-wrapped to the vehicle document portfolio. Its purpose is to allow emergency refueling at filling stations that have incorrectly-sized or high volume (truck stop) diesel filler nozzles. Make certain to explain the function of the adapter to the customer during vehicle delivery, and place it into the vehicle. The adapter is available under BMW part number 16 11 0 440 157. For more information refer to [SI B16 03 08](#).

For cold weather operation, filling stations may use "winter diesel", which is an approved blend of ultra-low sulfur kerosene with ULSD. Such a blend will help prevent the diesel fuel from gelling at temperatures below approx. 20F.

Observe the engine break-in guidelines by not exceeding 3500 rpm before 1200 miles, and avoid full-throttle as well as the automatic transmission "kick-down" function.


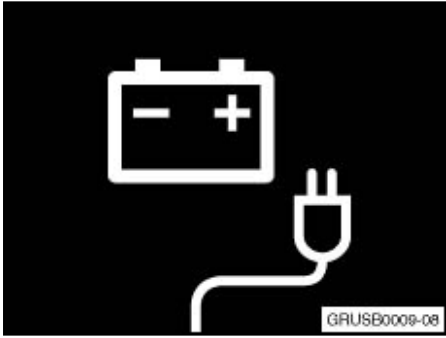
The 335d is not equipped with the instrument cluster remote check of the engine oil level. Instead, it utilizes a traditional dipstick. To obtain an accurate reading, observe the level only after the engine has been shut off for at least 5 minutes, with the car on a level surface.

There are additional warning lamps which may illuminate in the instrument cluster:

- Preheating (aka pre-glow) at cold start, ambient temperatures below approx. 32°F.
- DEF low (more information in the Service Maintenance section below)
- Diesel particulate filter needs servicing

7 Series

As a convenience, the 7 Series' battery state-of-charge (SOC) can be checked when the transport mode is active. This can be useful during vehicle storage prior to performing the QC1, or prior to the 4-week battery charging schedule. A symbol illuminates in the instrument cluster for a few seconds once the ignition is turned on, showing one of the following:

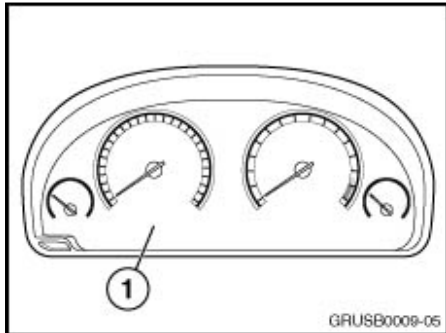
Symbol	Battery condition	Audible signal?	Action
	OK	No	none
	Discharged 35-65%	No	Charge battery using BMW-approved charger. Refer to B04 11 02 .
	Low(below 35%)	Double gong	Replace Battery and perform energy diagnosis.



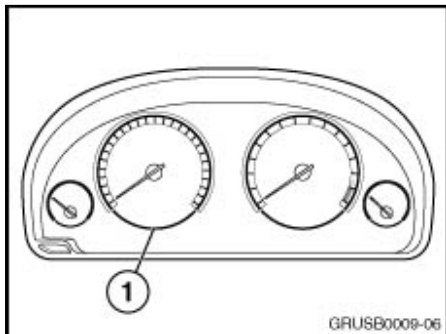
Maintain the 4-week BMW battery charging schedule as referenced in [B61 18 08](#).

Once transport mode has been deactivated as part of QC1, the SOC symbols no longer appear.

The 2009 7 Series does not contain a battery master disconnect switch, nor a "long-term" storage switch as were utilized in the previous 7 Series (E65).

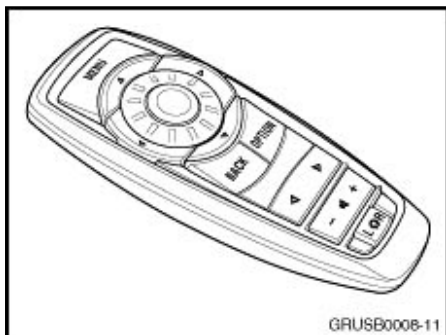


"Sleep mode" is active if the bottom section of all instruments is not visible (1).



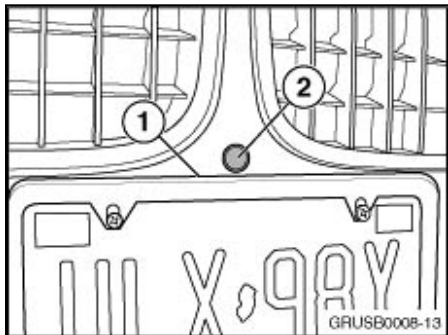
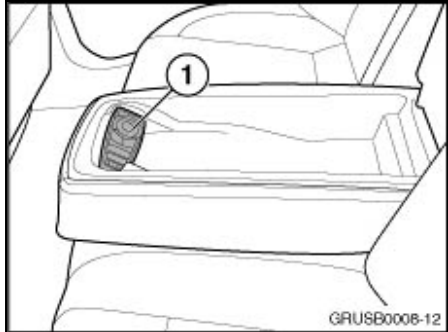
If the vehicle has been recently parked but is still "awake", the bottom section of all instruments is visible, making a full circle (1).

7 Series require the same operations for QC1 as 3 or 5 Series, but note the following:

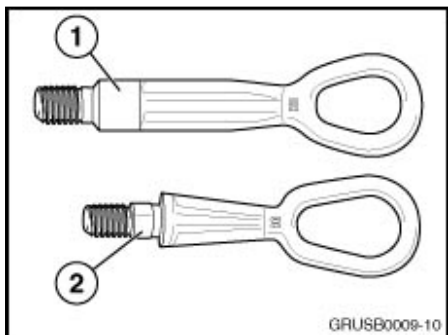


The optional rear seat entertainment system (recognised by the presence of an LCD screen on each front seat backrest) includes a remote control, contained within a plastic bag inside the by-pack bag.

Remove the remote control from the bags and place it into the recess (1) inside the rear seat center armrest.



On states requiring a front license plate, install the mounting base provided with the vehicle onto the front bumper. Do not position the top of the license plate, nor any decorative/promotional frame (1) any higher than the top edge of the license plate mounting base. Such a protrusion may interfere with the signal from the front center park distance control (PDC) sensor (2).



The tow hook (1, included in tool kit) is not only longer than tow hooks for other BMW models (2), it also has a larger diameter thread and is therefore not interchangeable.

Install and firmly anchor the floor mats, which are included with the 7 Series as standard equipment.

Z4

- Utilizes the same larger tow hook as 7 Series
- The snap-in cupholder for the center console is stored in the right side of the glove compartment.

1 Series, 3 Series and Z4

The USB (universal serial bus) cable which came with option 6FL (iPod and USB adapter) has been discontinued as of 5/09 vehicle production. It was normally found in the vehicle's by-pack.

Service Maintenance:

In case the Key Reader or Service Advisory Module (SAM) is momentarily inoperative, the customized Service Maintenance checklist generated by SAM will not print out. Refer to [SI B00 05 09](#) for CBS Service Maintenance Substitute Checklists.

Minor changes take effect starting with 3/09 vehicle production.

Model	Engine	Service Item	New interval as of 3/09 prod.	Replacement interval thru 2/09 prod.
128i, 328i	N52K	Spark Plugs	60,000 mi. or every 4th engine oil service	100,000 mi.
128i, 328i SULEV/PZEV	N51	Spark Plugs	60,000 mi. or every 4th engine oil service	100,000 mi.

1, 3 Series except M, incl. 335d	N51, N52K, N54, M57	Engine air filter	Every 2nd oil change	Every 3rd oil change
335d	M57	Diesel fuel filter	Every 2nd oil change	Every 3rd oil change

For more information on maintenance operations on existing models, refer to:

1 Series	B00 01 07
3 Series sedan	B00 01 05 , B00 01 07
3 Series coupe, convertible	B00 02 06
M3	B00 01 07
5 Series	B00 02 03 , B00 01 07
M5, M6	B00 01 05 , B00 02 06 , B00 01 07

UPDATE! All 2009 Models:

UPDATE! Note these changes in maintenance, effective 7/1/09:

- UPDATE!** "Perform brief check" has been eliminated from the "Standard Scope".
- UPDATE!** Body corrosion inspection has been eliminated from the "Vehicle Check".

M3

Reminder for operations needed at the 1200 Mile Service:

- Replace the engine oil and oil filter
- Replace the transmission oil on the standard-equipment 6-speed manual unit.
 - Note: The optional M DCT Drivelogic transmission has a long-term rated oil DCTF-1, which requires no replacement unless specified for a repair.
- Remove and clean the transmission filter on the standard-equipment 6-speed manual unit
- Replace the differential oil

Repeat these maintenance operations at every 3rd Engine Oil Service.

Note: For M3, M5 and M6 the 1200 Mile Service is counted as the "first" engine oil service. The engine oil nominal interval is approx. 15,000 miles (can vary per CBS). Therefore, the second time the engine oil needs to be changed would be when the vehicle reaches approx. 16,200 mi (1200 + 15,000) mi. Using the same nominal interval, the third oil service would be due at approx. 31,200 mi (actual miles based on CBS). That would coincide with the "Vehicle Check" maintenance operation.

No other models require the 1200 Mile Service. Therefore, all non-M models (except 335d) would need their first engine oil service at approx. 15,000 mi.

Note: The M3's engine air intake filter does NOT need to be replaced at the 1200 Mile Service. Its first scheduled change is at the Engine Oil Service occurring at approx. 16,200 miles, then only required at **every other** Engine Oil Service thereafter (i.e. at approx. 46,200 mi.).

335d

The oil change interval has been slightly reduced compared to the 335i, with an average baseline distance of 13,000 miles.

Engine oil is also different than for the 335i. Use only "low-ash" synthetic oils such as Castrol SLX Professional OE SAE 5W-30 (Castrol # 06070). This oil is also available through BMW via the virtual warehouse with Castrol, under BMW part number 07 51 0 037 195 (1 qt. bottle). Orders



for this oil should be placed at the same time as your regular orders for BMW High Performance synthetic engine oil (gasoline engines) to achieve the minimum order quantity level. The minimum order quantity is 576 quarts per delivery, which can consist of a combination of diesel engine and gasoline engine oil quantities.

NOTE: Diesel engine oil is packaged 6 bottles to one case; therefore, the oil must be ordered in increments of 6 quarts.

Oil information also appears on a label in the engine compartment as a reminder.

Vehicles are factory-filled with DEF (diesel engine additive), also known as AdBlue. DEF is stored in two separate reservoirs within the vehicle. The "active" reservoir from which the DEF is injected into the exhaust system holds approx. 1.6 gallons. It is heated at low exterior temperatures to prevent the DEF from freezing. The second reservoir feeds the active tank via a transfer pump and is large enough to last between scheduled engine oil changes. It is referred to as the "passive" tank, with a capacity of approx 4.5 gallons, and is located in the "spare tire well" of the trunk. At every Engine Oil Service, all remaining DEF must be completely drained from both tanks, and then refilled with new DEF. It is not sufficient to "top up" the reservoir.

The filling location for both tanks is behind an access flap on the surface of the rear bumper's left side. Remove the plugs by inserting the front face of the screwdriver handle (from the vehicle's on-board tool kit) into the plug's recess.

Even though there should be sufficient DEF to last between engine oil changes, if the supply runs low the instrument cluster warning lamp will indicate the estimated remaining distance which the vehicle may be driven, starting at approx. 1000 more miles. At approx. 200 miles, the warning lamp will illuminate again, with the miles counting down to 0. *Once the distance reaches 0 miles (shown by "- -" with the warning lamp symbol), the car will not start up again until DEF is refilled.* This is done so that the vehicle meets federal emissions regulations. However, the DEF system does allow one single "emergency" engine start at "0" miles, provided that you start the engine within 3 minutes of last shutting it off.

DEF is available at BMW centers in a 64-oz. (1/2 gallon) bottle for adding to the reservoir before a scheduled Engine Oil Service, available under BMW p/n 83 19 0 441 139. This bottle is also referred to as a "Kruse" bottle due to the patented fill spout design. It is strongly advised that each BMW Center always maintains at least 4 such bottles in their parts inventory. This is the preferred container for sale to a customer in case he/she needs to add DEF after the "DEF low" warning lamp illuminates, and they plan to drive the vehicle for a longer distance before scheduling an Engine Oil Service.

One shipment of DEF will be sent to each BMW center prior to the first vehicle arrival.

For filling new DEF during a scheduled Engine Oil Service, use only the 2.5 gallon DEF container, available under BMW P/N 83 19 0 440 158. Refer to [SI B16 01 09](#).

Refer to [SI B04 14 09](#) and [SI B16 01 09](#) for the Diesel Extractor/Filler Tools needed for draining remaining DEF, and then filling new DEF during a scheduled Engine Oil Service.

Other 335d maintenance items:

- The ventilation system microfilter must be replaced at every 2nd engine oil change.
- The diesel engine fuel filter must be replaced at every 3rd engine oil change.
- The diesel engine fuel filter must be replaced at every 3rd engine oil change on vehicles thru 2/09 production; but at every 2nd engine oil change on vehicles built as of 3/09.

7 Series

General maintenance operations are indicated via the Central Information Display (CID) and utilize the same CBS symbols as the 335i.

The recommended engine oil for the N63 is BMW High-Performance Synthetic Oil 5W-30, available under part number 07 51 0 017 866. Fill capacity (with filter change) is 9.0 qt (8.5l).

Engine air filter replacement interval is at approx. 30,000 miles or at every 2nd engine oil service.

The spark plug replacement interval for the N63 engine is 45,000 miles, or at every 3rd engine oil service. This operation is not indicated by its own display symbol in the CBS index, but is linked to a multiple of the engine oil service.

Z4

General maintenance operations are specified by CBS, indicated via the Central Information Display (CID) and utilizing the same symbols as the 3 Series. Maintenance operations are the same as for the 328i and 335i Convertible (E93).

Engine air filter replacement interval is at approx. 30,000 miles or at every 2nd engine oil service.

The spark plug replacement interval for the N52K engine is 60,000 miles or at every 4th engine oil service. The interval for the N54 engine is 45,000 miles or at every 3rd engine oil service. This operation is not indicated by its own display symbol in the CBS index, but is linked to a multiple of the engine oil service.

General Notes

2009 Service and Warranty Information booklets: One booklet now covers the 1, 3, 5 and 6 Series with the exception of the respective M versions, and the 335d.

1 Series (including SULEV/PZEV)	SD92-368
3 Series except M3 and 335 Diesel	SD92-368
M3 Sedan, Coupe and Convertible	SD92-369
335d	SD92-373
528i, 528i xDrive, 535i, 535i xDrive, 535i xDrive Sports Wagon, 550i	SD92-368
M5, M6	SD92-369
650i Coupe and Convertible	SD92-368
7 Series	SD92-372
Z4	SD92-375

PARTS INFORMATION

Under separate cover, one pack of the Quality Certification I form for the 2009 BMWs will be sent to each BMW center's Service Manager. Additional copies may be ordered as listed below:

Item	Description	Qty	Price
SD92-376	Quality Certification I form (2009 1, 3, 5, 6, 7 Series; Z4)	1 pack	\$4.75
2/09		(= 25 forms)	

These items are available online at BMW TIS under Materials Ordering. Refer to bulletin [B10 02 02](#) for instructions on how to place an order.

WARRANTY INFORMATION

Reimbursement of the BMW Pre-Delivery Inspection (Quality Certification I) on 2009 vehicles will be via submission of a warranty claim when the work is completed. This was requested by the Premium Aftersales Council to improve center profitability, since payment will be made upon completion of the work and submission of the warranty claim, as opposed to waiting until the vehicle is registered as sold.

- If the Display and Delivery portions of the inspection are performed separately, individual claims should be submitted when those operations are performed.
- If the entire QC1 delivery inspection is performed at the same time, submit one claim for "Spot Delivery". This is an important difference from the prior process, and claims must not reflect Display and Delivery if only the Spot Delivery was actually performed.
- All vehicles are only eligible for either the Display and Delivery Inspection, or the Spot Delivery Inspection.
- If a BMW center performs the Display Inspection and the vehicle is traded, then the second center may only perform and claim the Delivery Inspection. Check the DCS Vehicle History Report to determine whether a claim for this work has been submitted by another center.
- If a BMW center receives a vehicle, does nothing to it and then trades it to another center, then the second center may perform the Display and Delivery Inspection or the Spot Delivery Inspection, whichever is relevant. Check the DCS Vehicle History Report to determine if a claim for this work has been submitted by another center.

BMW Company Vehicles

Reimbursement for performing the QCI on BMW company vehicles (of any model year) must still be requested by submitting a claim through DCS, using the Spot Delivery codes as listed below:

Defect Code:	11 99 99 77 BV
Labor Operation:	00 00 012
Flat Rate Units:	Refer to KSD for flat rate times.

Note: BMW company vehicles delivered to field personnel may have already received a full QCI at the Vehicle Distribution Center (VDC) which serves your region. This should be evident upon arrival at your center by the following:

- The absence of the usual protective seat and door panel covers, and the battery main-disconnect cable.
- The service windshield wipers already having been installed.
- The Monrone label not being affixed to the window, etc.
- VDCs affix a small orange-colored label onto the center console near the transmission selector lever which reads "QC1 already done at VDC!" If this label is found, remove it prior to delivery to the employee.

Please verify that the QC1 has already been performed at a VDC on a specific vehicle by contacting your regional Distribution Manager with the chassis number.

IMPORTANT

As with all work that is reimbursed by BMWNA, the repair order, time recording and record keeping requirements outlined in the Warranty Policy and Procedures Manual must be strictly observed.

ATTACHMENTS

View PDF attachment [SD92-376](#).