



### MODEL

I01 (i3 and i3 REx)

I12 (i8)

## SITUATION

Distribution of the following tool will be through the Automatic Tool Shipment Program. Additional tools may be ordered through your Regional Distribution Center (RDC). All prices in this bulletin are introductory prices and are only valid at the time of initial publication.

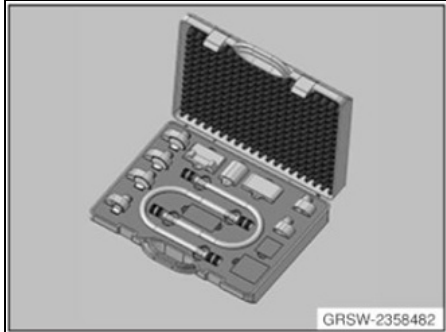
The air conditioning (AC) system flush kit is used to flush the AC system after the compressor has sustained mechanical damage. Mechanical damage frequently sends metal shavings (swarf) into the system. Using the flushing adapter kit saves removing the AC system components for cleaning.

The expansion valves (two), receiver dryer and HV battery are bypassed with the adapters. The R134a recycling/recovery machine is used to flush the system, regardless of the refrigerant type installed by the factory (R1234yf future). When flushing is complete, the AC system must be evacuated according to the repair instructions (ISTA 64 50 770 or 64 50 771).

When the repair is completed, the system is refilled with the factory-mandated refrigerant (vehicle AC label).

### Important

**Only properly trained personnel, who have passed all applicable technical training courses, should perform any maintenance or repairs on any Hybrid or Electric Vehicle. Work performed by unqualified persons may result in severe injury or damage to the vehicle. Additional information may be found in REP 61 00... Observe safety instructions when handling electric vehicles.**



GRSW-2358482

#### AC System Flushing Adapter Kit

Order P/N 83 30 2 358 482

Price - \$783.46

The AC system flushing adapter kit consists of the following adapters:

- Compressor low pressure – three pieces
- Compressor high pressure – one piece
- HV battery expansion valve – one piece
- Evaporator expansion valve – two pieces
- Receiver dryer – two pieces
- Receiver dryer adapter hose – two pieces



GRSW-2286730

All of the pieces that follow are included in the kit. Part numbers are for restocking purposes only.

P/N 83 30 2 286 730

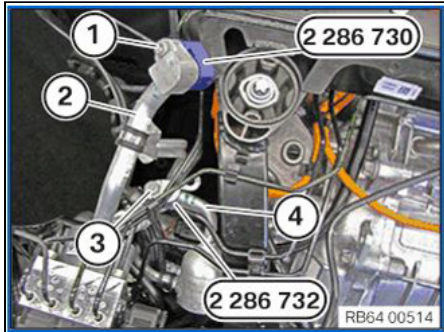
- Compressor low-pressure adapter
- i3 with heat pump requires three pieces
- Refer to illustration RB6400514.
- For complete repair information on this tool, refer to ISTA Repair Manual section 64 50 770 or 64 50 771.

P/N 83 30 2 286 732

- Compressor high-pressure adapter
- Refer to illustration RB6400514.



- For complete repair information on this tool, refer to ISTA Repair Manual section 64 50 770 or 64 50 771.

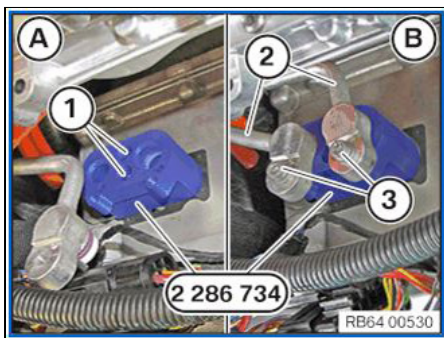


- Mount adapter 83 30 2 286 730 on to the low-pressure line of the compressor (2 – thicker line) using the vehicle screw (1).
- Mount adapter 83 30 2 286 732 on to the high-pressure line of the compressor (2 – thin line) using the vehicle screw (3).
- For complete repair information on this tool, refer to ISTA Repair Manual section 64 50 770 or 64 50 771.



P/N 83 30 2 286 734

- HV battery expansion valve adapter
- Refer to illustration RB6400530.
- For complete repair information on this tool, refer to ISTA Repair Manual section 64 50 770 or 64 50 771.



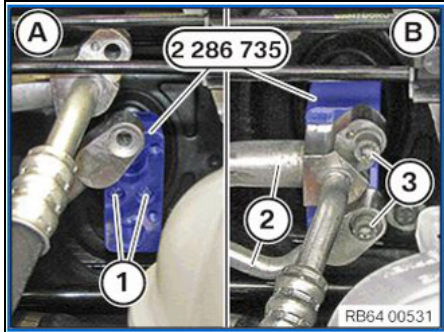
- A – Mount adapter 83 30 2 286 734 (1) in place of the expansion valve.
- B – Mount AC lines (2) on to the adapter using the vehicle screws (3).
- For complete repair information on this tool, refer to ISTA Repair Manual section 64 50 770 or 64 50 771.



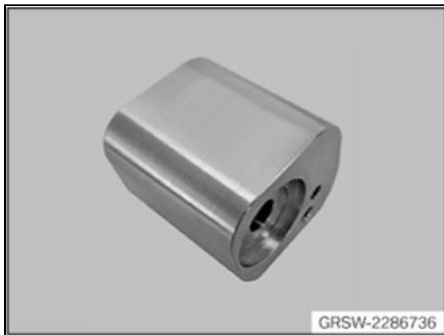
P/N 83 30 2 286 735

- Evaporator expansion valve adapter
- Refer to illustration RB6400531.
- For complete repair information on this tool, refer to ISTA Repair Manual section 64 50 770 or 64 50 771.

- A – Mount adapter 83 30 2 286 735 in place of the expansion valve using the vehicle screws (1).
- B – Mount the AC lines (2) on to the adapter using the vehicle screws (3).



- For complete repair information on this tool, refer to ISTA Repair Manual section 64 50 770 or 64 50 771.



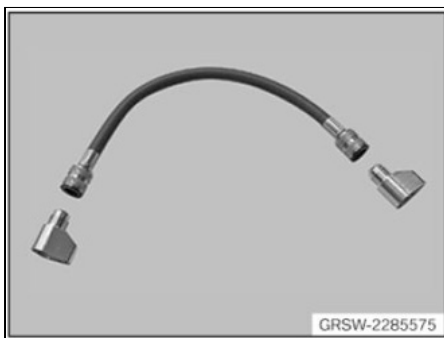
P/N 83 30 2 286 736

- Evaporator expansion valve adapter
- Used only on the expansion valve above the rear axle – vehicles with a heat pump
- For complete repair information on this tool, refer to ISTA Repair Manual section 64 50 771.



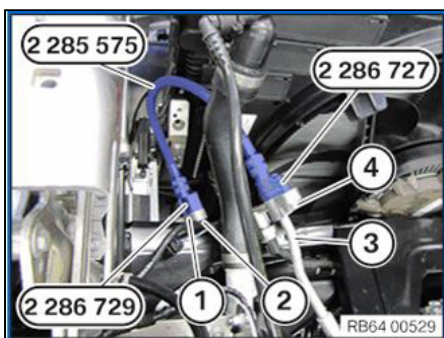
P/N 83 30 2 286 727 and  
83 30 2 286 729

- High- and low-pressure condenser adapters
- Refer to illustration RB6400529.
- For complete repair information on this tool, refer to ISTA Repair Manual section 64 50 770 and 64 50 771.



P/N 83 30 2 285 575

- Adapter hose for condenser adapters
- Refer to illustration RB6400529.
- For complete repair information on this tool, refer to ISTA Repair Manual section 64 50 770 and 64 50 771.



- Mount high-pressure adapter P/N 83 30 2 286 727 on to the high-pressure line (3) from the condenser (thin line).
- Secure with the vehicle screws (4).
- Mount low pressure adapter P/N 83 30 2 286 729 on to the low-pressure line (1) from the condenser (thick line).
- Secure with the vehicle screws (2).
- Connect adapters 83 30 2 286 727 and 83 30 2 286 729 with adapter hose 83 30 2 285 575.
- For complete repair information on this tool, refer to ISTA Repair Manual section 64 50 770 and 64 50 771.

## SPECIAL TOOL WARRANTY

Terms of the Parts department Special Tool Warranty can be viewed and printed by following the path

below.

- Go to TIS.
- Select “Tools and Equipment.”
- Select “Special Tool Parts Warranty.”