



What's New:

- G32 has been removed from the affected model list

MODEL

F22 (2 Series Coupe)	F23 (2 Series Convertible)	F30 (3 Series Sedan)	F31 (3 Series Sports Wagon)
F32 (4 Series Coupe)	F33 (4 Series Convertible)	F34 (3 Series Gran Turismo)	F36 (4 Series Gran Coupe)
G01 (X3)	G12 (7 Series Sedan)	G30 (5 Series Sedan)	

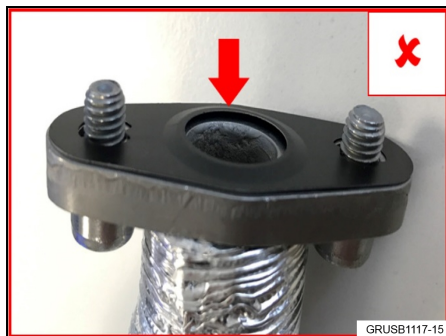
With B46O, B48M or B48O engine

SITUATION

Exhaust turbocharger, oil return line leaking at connection to turbocharger.

CAUSE

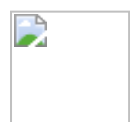
Incorrect assembly of the "asbestos-free gasket". The gasket was incorrectly flipped during installation with the bead raised toward the turbocharger, as shown.



CORRECTION

Parts replacement and correct installation.

PROCEDURE



Warning: Hot surfaces. Risk of burns. Only perform work on cooled components.

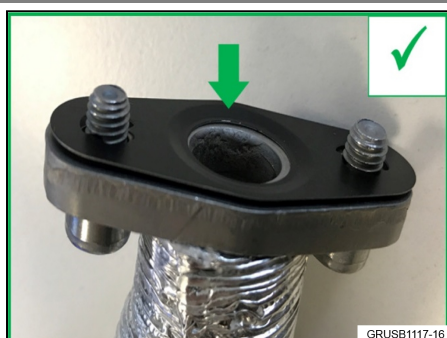
For conditions that are similar to the situation described:

Replace the turbocharger oil return line, asbestos-free gasket and the O-ring 16 x 2 mm according to REP 11 42 210 - "Removing and installing/sealing or replacing the oil return line for the exhaust turbocharger".



Note: Mount the "asbestos-free gasket" so that its bead is raised towards the oil return line as

shown.



PARTS INFORMATION

Part Number	Description	Quantity
11 42 7 617 535	OIL PIPE OUTLET	1
11 42 7 577 017	Gasket Asbestos Free	1
11 42 8 604 872	O-ring	1

Bulk Materials

83 21 2 365 954	0W-20, LL14FE+	As needed
or		
83 21 2 405 079	0W-20, LL14FE+	As needed

WARRANTY INFORMATION

Covered under the terms of the BMW New Vehicle Limited Warranty for Passenger Cars and Light Trucks or the BMW Certified Pre-Owned Program.

Defect Code:	1165184800	
Labor Operation:	Labor Allowance:	Description:
11 42 210	Refer to KSD2	Removing and installing/sealing or replacing oil return line for exhaust turbocharger (Main work)
Or:		
11 42 610	Refer to KSD2	Removing and installing/sealing or replacing oil return line for exhaust turbocharger (Plus work)

If you are using a Main labor code for another repair, use the Plus code labor operation 11 42 610 instead of 11 42 210.

Refer to KSD2/AIR for the corresponding flat rate unit (FRU) allowances.

And, if necessary:

Sublet – Bulk Materials

Sublet Code 4	See sublet reimbursement calculation below	Reimbursement for the repair-related bulk materials (BMW part numbers, please do not use the part numbers for claim submission)
----------------------	--	---

Sublet reimbursement calculation for claiming repair-related bulk materials (BMW part numbers) is at dealer net price for the “used quantities” plus your center’s handling.

Enter this material cost in sublet and itemize the amount on the repair order and in claim comment section.