



Please perform the procedure outlined in this Service Information on all affected vehicles before customer delivery. In the event the customer has already taken delivery of the vehicle, please perform the procedure the next time the vehicle is in the shop.

This Service Information bulletin replaces SI B16 08 18 dated October 2018

What's New:

- Warranty Information has been updated

MODEL

G12 (7 Series Sedan)	G30 (5 Series Sedan)	G32 (6 Series Gran Turismo)	
----------------------	----------------------	-----------------------------	--

SITUATION

The fuel delivery unit (in-tank fuel pump) may be the incorrect part installed for the Model/Market.

AFFECTED VEHICLES

This Service Action involves certain G30, G32 and G12 vehicles produced from 8/10/2015 to 3/26/2018.

Vehicles which require this Service Action to be completed will show it as "Open" when checked either in AIR, the "Service Menu" of DCSnet (Dealer Communication System) or with the Key Reader.

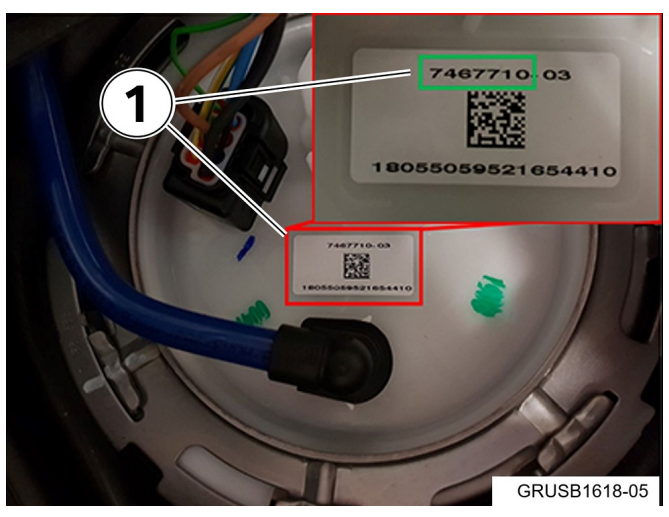
CORRECTION

Inspect the part number of the fuel delivery unit, and if necessary, replace the fuel delivery unit.

PROCEDURE

Follow Repair Instruction 16 14 090 Removing and installing/replacing the delivery unit (without drawing off and filling fuel) to gain access to the top of the fuel delivery unit

(NOTE: Select the appropriate version of the repair instruction based on style of rear seat).



Check the part number of the fuel delivery unit (1). Compare the installed part number with the table below.

- If the part number matches any of the part numbers listed (for model/engine) no further repair is necessary.
- If the installed part number does not match the listed number in the table, the fuel delivery unit will need to be replaced. Continuing following the Repair Instruction 16 14 090 Removing and installing/replacing the delivery unit (without drawing off and filling fuel) to replace the fuel delivery unit.

G12 Gasoline:

Engine type	relevant optional equipment	Version 1	Version 2	Version 3	Version 4
B58	Basic	7400687	7400692	7467710	7467717
N63	Basic	7400688	7400693	7467713	7467718
N74	Basic	7465129	7465131	7465129	7465131
ALPINA	none	7400688	7400693	7467713	7467718

G30, G32 Gasoline:

Engine type	relevant optional equipment	Version 1	Version 2	Version 3	Version 4
B46	Basic	7408465	7408470	7476101	7476105
B58	Basic	7408465	7408470	7476101	7476105
N63	Basic	7408466	7408471	7476102	7476106

G30 Diesel:

Engine type	relevant optional equipment	Version 1	Version 2	Version 3	Version 4
B57	Basic	7408469	7408472	7476107	7476108

PARTS INFORMATION

Part Number	Description	Quantity
16 13 1 176 747	Plastic nut M6	5
51 71 7 342 691	Seal, sealing cap G12	1
Or:		
51 71 7 430 971	Seal of sealing cap G30/G32	1
Refer to ETK	Fuel delivery unit	1 (only if required)

Refer to ETK and the repair instructions for onetime use fastener and component information regarding additional screws, gaskets and seals.

WARRANTY INFORMATION

Reimbursement for this Service Action will be via normal claim entry utilizing the following information:

Defect Code:		
	0016400200	

Completion "before" vehicle delivery to the customer or the vehicle is already in the workshop

Labor Operation:	Labor Allowance:	Description:
00 66 849	3 FRU	Checking fuel delivery unit (No repair necessary) (Plus work)
OR:		
00 66 850	7 FRU (G12); 8 FRU (G30/G32)	Checking and replacing the fuel delivery unit (includes extracting fuel from the fuel tank and filling) (Plus work)

Posted: Wednesday, December 5, 2018