

**MODEL**

| | | | |
|------------------------------------|----------------------------------|------------------------------------|----------------------------------|
| F95 (X5 M Sports Activity Vehicle) | F96 (X6 M Sports Activity Coupe) | F97 (X3 M Sports Activity Vehicle) | F98 (X4 M Sports Activity Coupe) |
| G01 (X3 Sports Activity Vehicle) | G02 (X4 Sports Activity Coupe) | G05 (X5 Sports Activity Vehicle) | G06 (X6 Sports Activity Coupe) |
| G07 (X7 Sports Activity Vehicle) | | | |

SITUATION

During inspection and/or diagnosis there is noticeable dirt/grease buildup on the axles near the inner and/or outer CV boots.

CAUSE

Surface contamination during component assembly. Additionally or over time, under normal operation of the vehicle, grease builds up on the axle shafts' CV boots.

CORRECTION

Surface contamination and/or grease build-up is normal. Do not replace the CV boot (inner) or axle half-shaft (outer).

Only replace a CV boot (inner) or axle half-shaft (outer) under the following circumstances:

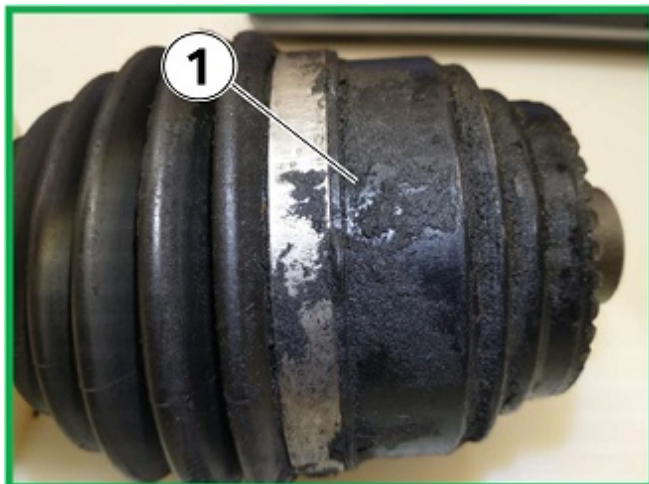
- There is a crack or tear in the CV boot
- There is a clamp missing from the CV boot
- The clamps can be easily moved/rotated (outside boot)
- There is visible grease slinging onto the components around the CV joint rotation area

PROCEDURE

Inspecting the axle CV boots-

- Check for all clamps (Two for each boot)
- Check that the clamps are secure to the boot
- Clean the boots with a shop rag; if the contamination is dried on, use silicone spray to remove the contamination for a better inspection (do not use brake cleaner or solvents, which have an aggressive effect on rubber)
- Examine the boots for damage (cuts, tears or punctures)

A. The following are examples of good axles/boots. Do not replace.

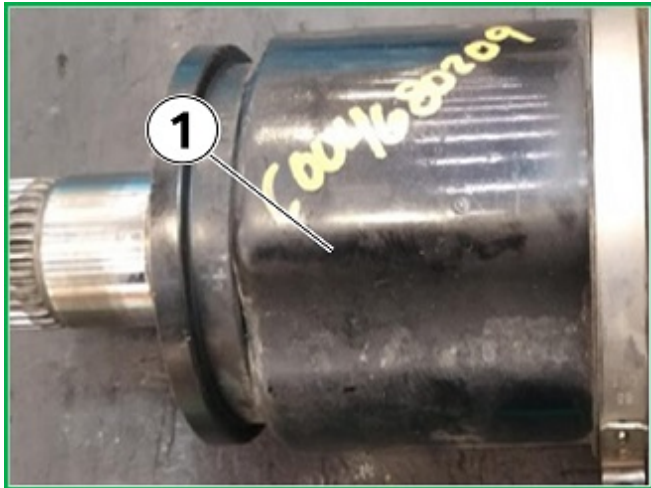


Example of dirt/contamination from outside influence (1).

Example of dirt/contamination from outside influence (1).

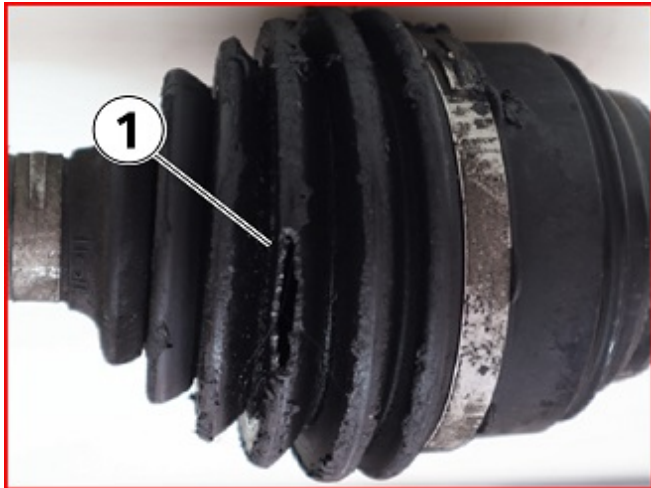


Example of dirt/contamination from outside influence (1).



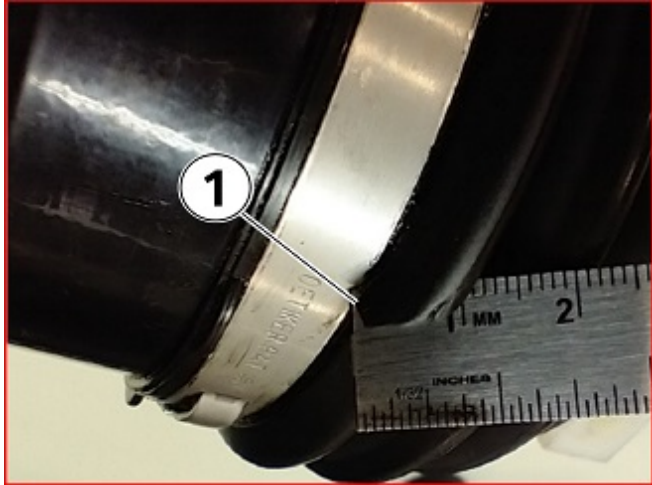
Or:

B. The following are examples of torn and/or leaking CV boots that require the necessary corresponding repair to be performed (CV boot/bellows repair kit installation or axle/output shaft replacement)

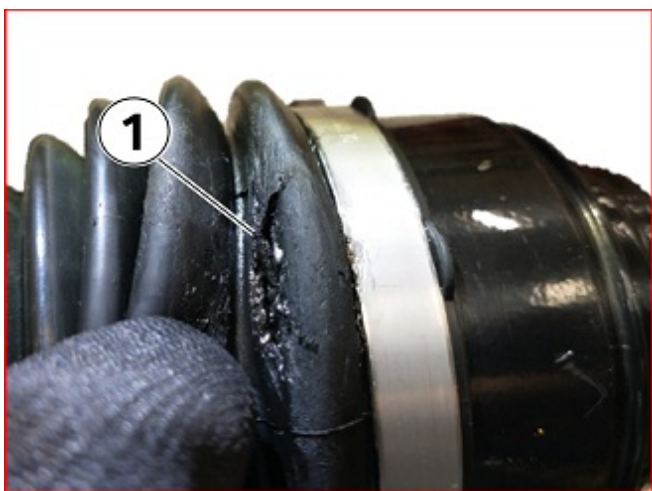


Tear in the boot (1).

Tear or cut in the boot (1).



Tear or cut in the boot (1).



The below example is a boot that is dispersing grease around the outer carrier (1).



PARTS INFORMATION

A repair is necessary, obtain and confirm the part numbers for your specific vehicle by entering the chassis number in either ETK or AIR which takes into account specific equipment and/or options.

CLAIM INFORMATION

This Service Information Bulletin provides technical, diagnostic, and repair-related information.

Damaged CV boots/bellows and axle/output shafts (front and rear), or other issues caused by outside influences, are not covered under the BMW limited warranties or program coverage that applies to the vehicle.

QUESTIONS REGARDING THIS BULLETIN

| | |
|---------------------|---|
| Technical inquiries | Submit feedback at the top of this bulletin |
| Warranty inquiries | Please contact the Warranty department by either using the Live Chat that's available in the Warranty Documentation Portal or through IDS by selecting Coverage, Policy, Coding Questions and Mileage Corrections |
| Parts inquiries | Submit an IDS ticket to the Parts Department |