



SERVICE ACTION: CHECK, AND IF REQUIRED, REPLACE THE RIGHTFRONT HALF SHAFT

Please perform the procedure outlined in this Service Information on all affected vehicles before customer delivery. In the event the customer has already taken delivery of the vehicle, please perform the procedure the next time the vehicle is in the shop.

MODEL

G01 (X3)			
----------	--	--	--

AFFECTED VEHICLES

This Service Action involves G01 (X3) produced from August 31, 2017 to September 6, 2017.

Vehicles which require this Service Action to be completed will show it as "Open" when checked either in AIR, the "Service Menu" of DCSnet (Dealer Communication System) or with the Key Reader.

SITUATION

An oil leak may develop at the right front axle output shaft where the shaft enters the output shaft extension housing.

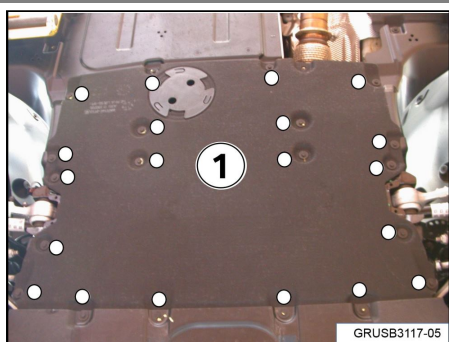
CAUSE

Manufacturing defect of the circlip that holds the output shaft into the extension housing.

CORRECTION

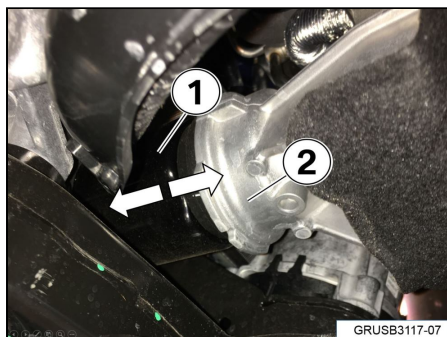
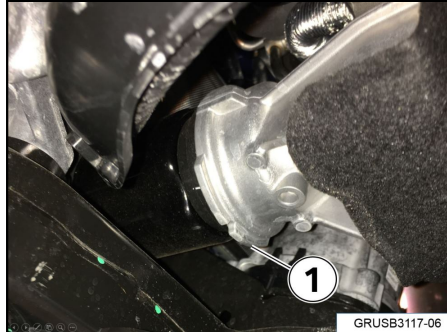
Check the gap of the **right side half shaft** where it enters the extension housing. If the gap is larger than 3mm, **replace the half shaft**.

PROCEDURE

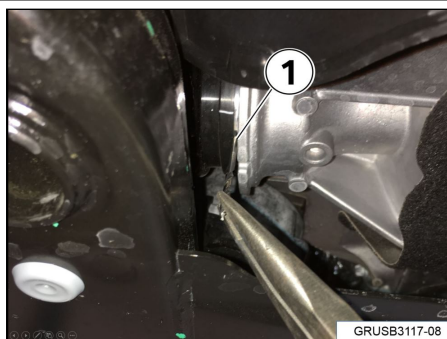


Remove the center lower protection cover (1).
Tightening torque of screws when reinstalling is 3Nm.

Check the right side output shaft where it enters the extension housing (1) for an oil leak. If oil is leaking, replace the output shaft. Follow Repair Instruction **31 60 000 Removing and installing/replacing left or right output shaft**.



If there is no oil leak: Check for play in the output shaft (by hand) and pull the half shaft (1) as far as possible away from the extension housing (2).



Insert a 3mm feeler gauge (3mm drill bit shown) into the gap between the output shaft and the extension housing (1). If the feeler gauge fits tight or will not fit (gap is $\leq 3\text{mm}$) then no further repair is necessary. If the feeler gauge fits loose (gap $>3\text{mm}$), replace the output shaft. Follow Repair Instruction **31 60 000 Removing and installing/replacing left or right output shaft. (Right Side - KSD2: 31 60 504)**

PARTS INFORMATION

Part Number	Description	Quantity
07 14 6 875 114	Hexagon collar nut	1
31 60 8 643 184	Front-right output shaft	1
31 20 6 866 022	Shouldered bolt with compression spring	1
33 10 7 505 601	Shaft sealing ring with circlip	1
31 53 7 502 681	Assembly ring	1
33 30 6 787 062	Combination nut	1
34 21 1 161 806	Allen screw	1

WARRANTY INFORMATION

Note: This Service Action repair does not qualify for Alternative Mobility Solution (AMS) expense reimbursement.

Reimbursement for this Service Action will be via normal claim entry utilizing the following information:

--	--	--	--

Defect Code:	0031810100	
Labor Operation:	Labor Allowance:	Description:
00 65 807	3 FRU	Checking the front right output shaft (No repair necessary) (Plus work)
Or:		
00 65 808	12 FRU	Checking and replacing the front right output shaft (Plus work)

And, as necessary

Sublet – Bulk Materials

Sublet Code 4	Up to \$15.00	Reimbursement for the supported repair-related bulk materials (Do not use part numbers for claim submission)
---------------	---------------	--

Sublet reimbursement calculation for claiming repair-related bulk materials (BMW part numbers) is at dealer net price for the “used quantities” plus your center’s handling.

Enter this material cost in sublet and itemize the amount on the repair order and in claim comment section.