



SERVICE ACTION: WATER INGRESS BENEATH LUGGAGE COMPARTMENT

Please perform the procedure outlined in this Service Information on all affected vehicles before customer delivery. In the event the customer has already taken delivery of the vehicle, please perform the procedure the next time the vehicle is in the shop.

MODEL

G30 (5 Series)			
----------------	--	--	--

AFFECTED VEHICLES

This Service Action involves 5 Series vehicles produced June 16th to June 19th of 2017.

Vehicles which require this Service Action to be completed will show it as "Open" when checked either in AIR, the "Service Menu" of DCSnet (Dealer Communication System) or with the Key Reader.

SITUATION

Possible water leakage into luggage compartment through PVC weld on floor. Accumulation of water in luggage compartment may not be noticed due to drain location in the vicinity.

CAUSE

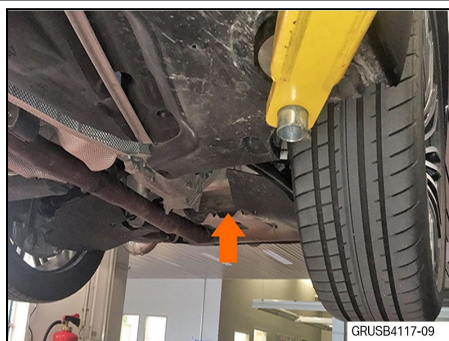
Manufacturing process change moved PVC weld on underside of vehicle, beneath luggage compartment.

CORRECTION

Repair PVC weld seam.

PROCEDURE

For affected vehicles:



1. Raise the vehicle on a lift.



2. Identify the critical area to be repaired as indicated.



3. Seal the existing seam.
4. Apply sealant generously over the critical area and be certain to spread it as shown.

PARTS INFORMATION

Part Number	Description	Quantity
83 42 2 409 985	Seam Sealing, Spreadable (300ml)	As needed

This "part number" is blocked from submission for warranty reimbursement (see "Warranty Information").

One container is sufficient for approx. 5 vehicles (60ml each).

WARRANTY INFORMATION

Reimbursement for this Service Action will be via normal claim entry utilizing the following information:

Labor Operation:	Labor Allowance:	Description:
00 65 690	3 FRU	Rework the PVC seam at the rear of the luggage compartment floor (Plus work)

And:

Sublet – Bulk Materials

Sublet Code 4	Up to \$3.00	Reimbursement for the repair-related bulk material, please do not use the part number for claim submission)
---------------	--------------	---

Enter this material cost in sublet and itemize the amount on the repair order and in claim comment section.