



This Service Information bulletin supersedes SI B52 04 18 dated July 2018

What's new:

- Production dates revised for each mod

MODEL

I12 (i8)	I15 (i8 Roadster)
----------	-------------------

- I12 (i8) produced up to November 2017
- I15 (i8 Roadster) produced up to March 2018

SITUATION

A creaking noise can be heard from the vicinity of the front seat cushion (Foam padding).

CAUSE

Seat pan is rubbing against the seat frame.

CORRECTION

Insert felt between seat pan and frame to eliminate the friction point.

PROCEDURE

For conditions that are similar to the situation described and as demonstrated in video:

1. Remove seat cover from seat following

Repair Instructions:

- oREP 52 13 402 Replacing seat cover for driver's seat; or/and
- oREP 52 13 403 Replacing seat cover for front passenger seat

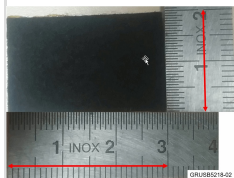
Note: Do not replace seat cover or disconnect the cover from the foam padding.

2. Using 1 millimeter thick adhesive-backed felt material part # 51 45 2 353 024, cut out 3 cm x 2 cm rectangles as shown in picture.

3. Adhere felt to seat pan over edge of opening, where shown (2 blue).

4. Recheck the repair before install the seat cover and foam padding.

5. Reinstall seat cover.



PARTS INFORMATION

Part Number	Description	Quantity
51 45 2 353 024	Set felt strip self-adhesive	Sublet

WARRANTY INFORMATION

Covered under the terms of the BMW New Vehicle Limited Warranty for Passenger Cars and Light Trucks.

Defect Code:	5210103900	
--------------	------------	--

I12 (i8 Coupe) Repairing the Left Side

Labor Operation:	Labor Allowance:	Description:
52 13 402	Refer to KSD2/AIR	Replacing (Remove and install) seat cover for driver's seat (Main work)
Or:		
52 13 902	Refer to KSD2/AIR	Replacing (Remove and install) seat cover for driver's seat (Plus work)

If you are using a Main labor code for another repair, use the Plus code labor operation 52 13 902 instead of 52 13 402.

Or:

I12 (i8 Coupe) Repairing the Right Side

Labor Operation:	Labor Allowance:	Description:
52 13 403	Refer to KSD2/AIR	Replacing (Remove and install) seat cover for front passenger seat (Main work) (Vehicle programming and encoding is not necessary for this repair as described)
Or:		
52 13 903	Refer to KSD2/AIR	Replacing (Remove and install) seat cover for front passenger seat (Plus work) (Vehicle programming and encoding is not necessary for this repair as described)

If you are using a Main labor code for another repair, use the Plus code labor operation 52 13 903 instead of 52 13 403.

Or:

I12 (i8 Coupe) Repairing Both Sides

Labor Operation:	Labor Allowance:	Description:
52 13 402	Refer to KSD2/AIR	Replacing (Remove and install) seat cover for driver's seat (Main work)
Or:		
52 13 902	Refer to KSD2/AIR	Replacing (Remove and install) seat cover for driver's seat (Plus work)
And:		
52 13 903	Refer to KSD2/AIR	Replacing (Remove and install) seat cover for front passenger seat (Plus work) (Vehicle programming and encoding is not necessary for this repair as described)

If you are using a Main labor code for another repair, use the Plus code labor operation 52 13 902 instead of 52 13 402.

Or, for the:

I15 (i8 Roadster) Repairing One Side

Labor Operation:	Labor Allowance:	Description:
52 13 400	Refer to KSD2/AIR	Replacing (Remove and install) seat cover on left or right front seat
Or		
52 13 901	Refer to KSD/AIR	Replacing (Remove and install) seat cover on left or right front seat

Or:

I15 (i8 Roadster) Repairing Both Sides

Labor Operation:	Labor Allowance:	Description:
52 13 400	Refer to KSD2/AIR	Replacing (Remove and install) seat cover on left or right front seat
Or		
52 13 901	Refer to KSD/AIR	Replacing (Remove and install) seat cover on left or right front seat
And:		
52 99 000	14 FRU	Work time to remove and install the seat cover on the other front seat

If you are using a Main labor code for another repair, use the Plus code labor operation 52 13 901 instead of 52 13 400.

Work time labor operation code 52 99 000 is not considered a Main labor operation. Also, since the "work time" FRU allowance to be claimed is specified, a separate punch time is not required. However, it still requires an explanation on the repair order and in the claim comments section.

And:

Sublet – Bulk Material

Sublet Code 4	See the sublet reimbursement calculations below	Reimbursement for the repair-related bulk material (Do not use part number for claim submission)
----------------------	---	--

Sublet reimbursement calculation for claiming the applicable repair-related bulk material (BMW part number) is at the dealer net price for the “quantity used” plus your center’s handling

Enter this material cost in sublet and itemize the amount on the repair order and in claim comment section.

Posted: Wednesday, August 29, 2018