



SERVICE ACTION: CHECKING AND, IF NECESSARY, REPLACING CONVERTIBLETOP LOCK

Please perform the procedure outlined in this Service Information on all affected vehicles before customer delivery. In the event the customer has already taken delivery of the vehicle, please perform the procedure the next time the vehicle is in the shop.

**MODEL**

I15 (I8 Roadster)		
-------------------	--	--

**SITUATION**

The knurled bolts on the convertible top locking base plates may not have been installed correctly on the cowl panel.

**AFFECTED VEHICLES**

This Service Action involves 77 I15 (I8 Roadsters) produced from 3/6/2018 to 5/14/2018. Vehicles which require this Service Action to be completed will show it as "Open" when checked either in AIR, the "Service Menu" of DCSnet (Dealer Communication System) or with the Key Reader.

**CAUSE**

The knurled bolts may not have been pressed completely into the base plate.

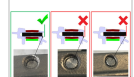
**CORRECTION**

Inspect the knurled bolts for correct installation on both the right and left base plates on the upper cowl. If the knurled bolts are not correctly installed, replace the affected base plate.

**PROCEDURE**



1. Lower the convertible top to inspect both convertible top locking base plates above the windshield.



2. Inspect the installation of the knurled bolts of both base plates. Reference the photo to the left for examples of faulty bolt installation. Are all 4 knurled bolts correctly pressed into both base plates?

**YES:** No further repair is needed.

**NO:** Continue to step 3 to replace one or both base plates.

3. Remove the upper cowl panel trim, following repair instructions **REP 51 44 150 "Replacing the cowl panel trim, top, inner"**.

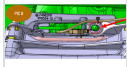
4. Mark the position of the base plates before removal.

5. Disconnect the micro switch wiring and remove the affected base plate(s) from the vehicle. Before complete removal, take note of the

number of shims used for each base plate. Ensure the shims do not fall out when the mounting bolts are removed.

6. Install the replacement base plate, reusing the original bolts and shims. Be sure to install the same number of shims that were removed. Install the base plate in the same marked location as it was originally installed and tighten the bolts to 8nm. Reconnect the micro switch wiring.

7. **For the right side base plate:** After installation, ensure that the locating pin of the convertible top is centered in the base plate opening as seen to the left. If the locating pin is not centered in the base plate, loosen the mounting bolts and adjust left or right until centered.



Note: This can be visually inspected from the bottom. The photo to the left demonstrates a view from the bottom looking up.

## PARTS INFORMATION

If defect code remains open, please submit a Recall IDS Ticket Request **with Key Read**. Order will be placed on your behalf VIN specific.

Part Number	Description	Quantity
54 34 7 458 297	Left base plate	1
54 34 7 458 298	Right base plate	1

## WARRANTY INFORMATION

Reimbursement for this Service Action will be via normal claim entry utilizing the following information:

<b>Defect Code:</b>	<b>0054550100</b>	
---------------------	-------------------	--

**Completion “before” vehicle delivery to the customer or the vehicle is already in the workshop**

Labor Operation:	Labor Allowance:	Description:
00 66 739	3 FRU	Checking both convertible top locking base plates (No repair is necessary) (Plus work)
Or:		
00 66 740	9 FRU	Checking both base plates <b>and</b> replacing <b>one</b> convertible top locking base plate (Plus work)
Or:		
00 66 741	10 FRU	Checking both base plates <b>and</b> replacing <b>both</b> convertible top locking base plates (Plus work)

Or:

**Completion after vehicle delivery to the customer (with no other Main work claimed)**

Labor Operation:	Labor Allowance:	Description:

00 66 146	5 FRU	Checking both convertible top locking base plates (No repair is necessary) (Main work)
Or:		
00 66 147	11 FRU	Checking both base plates <b>and</b> replacing <b>one</b> convertible top locking base plate (Main work)
Or:		
00 66 148	12 FRU	Checking both base plates <b>and</b> replacing <b>both</b> convertible top locking base plates (Main work)

And, as applicable:

**Alternative Mobility Solution (AMS) for Vehicle Owners**

This Service Action repair qualifies for Alternative Mobility Solution (AMS) expense reimbursement, claim this item under the Defect Code noted above as follows:

- Sublet Code 2 - Itemize the AMS sublet amount on the repair order and in the claim comment section.

Please refer to SI [B01 29 16](#) for additional information.