



MODEL

112 (i8)	115 (i8 Roadster)		
----------	-------------------	--	--

SITUATION

The alarm (DWA) system of the vehicle is being triggered accidentally.

CAUSE

The tilt sensor is too sensitive. Activation can occur without touching the vehicle due to loud noises (vibrations) in the vicinity of the vehicle.

CORRECTION

Add damping material between the emergency power siren (with tilt alarm sensor) and vehicle body.

PROCEDURE

For conditions that are similar to the situation described:

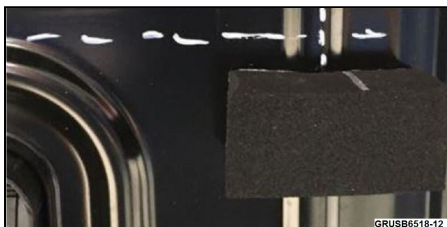
- Using the latest version of ISTA, read error code entries stored in the alarm memory.

Were activations of the alarm caused by triggering of the tilt/alarm sensor?

YES- go to next step.

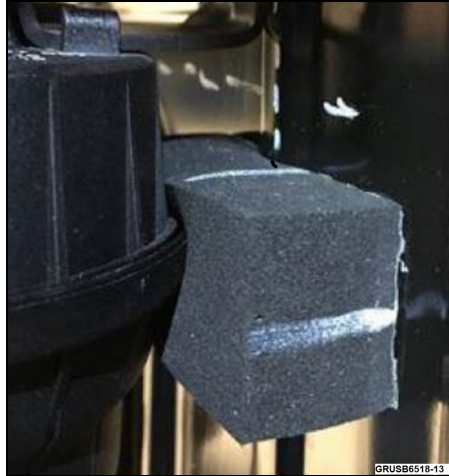
NO – continue troubleshooting using ISTA recommendations.

- Remove emergency power siren according to REP 65 75 055 - Install and remove/replace emergency power siren with tilt alarm sensor.



- Cut damping foam (part #16 13 6 755 903) to appropriate size and fit into position, as shown

- Damping foam should be in contact with widest part of alarm siren.



PARTS INFORMATION

Part Number	Description	Quantity
16 13 6 755 903	Damping Foam (100x25x15mm)	As needed

WARRANTY INFORMATION

Covered under the terms of the BMW New Vehicle Limited Warranty for Passenger Cars and Light Trucks.

Defect Code:	6575401400	
Labor Operation:	Labor Allowance:	Description:
00 00 006	Refer to KSD2/AIR	Performing "vehicle test" (with vehicle diagnosis system – checking faults) (Main work)
Or:		
00 00 556	Refer to KSD2/AIR	Performing "vehicle test" (with vehicle diagnosis system – checking faults) (Plus work)
And:		
61 21 528	Refer to KSD2/AIR	Connect an approved battery charger/power supply (indicated in KSD2 as "Charging battery")
And:		
61 25 910	Refer to KSD2/AIR	Recharging high-voltage battery unit (to high voltage charging socket)
And:		
65 75 555	Refer to KSD2/AIR	Remove and installing the emergency current siren with tilt alarm sensor (to install the damping foam)

And, as needed:

Sublet – Bulk Materials

Sublet Code 4	See the sublet reimbursement calculations below	Reimbursement for the repair-related bulk material (Do not use part number for claim submission)
----------------------	---	--

Sublet reimbursement calculation for claiming repair-related bulk material (BMW part number) is at the dealer net price for the “quantity used” plus your center’s handling.

Enter this material cost in sublet and itemize the amount on the repair order and in claim comment section.

ATTACHMENTS

View PDF attachment [REP 65 75 055](#).